



St. Matthew's Episcopal Church

ANNUAL REPORT 2020

From the Rector

Dear and Beloved Friends,

Who would have thought that we would ever have to close the church? Yep, that's a trick question. We NEVER closed the church! We did close the church building, but closing the church building and closing the church are two very different things.

No matter how great the challenges or how formidable the adversity, in 2020 we found new and robust ways to be the church. We moved our mission of knowing and sharing God's love forward, and did so in ways that have bordered on being miraculous.

That will become crystal clear in the pages ahead. The pictures and stories you will find there tell a story of people faithfully living like Jesus with such boldness, courage, and stunning generosity that it is unlike anything I have ever seen.

As you look back at all that we have accomplished in 2020, by God's grace and with God's help, I hope it will inspire you to continue to do all that we can do -and then some!-to draw people into an ever deeper relationship with God, one another, and our community in 2021. I pray that you will continue to be faithful in worship, devoted to service, and audacious in giving. Parents: I hope you will remain committed to your children's faith formation, because I can't think of anything more important to give them in times like these (or any other time, really, but times like these make the need for, and value of, faith so obvious).

The church building may be closed, but we have never stopped being the Church. Our God is far greater than any obstacles we might face; 2020 showed us that over and over again. Whatever 2021 might bring, God will lead us through. And seeing the things that God is doing through God's people -through you- will continue to be source of hope, inspiration, and encouragement no matter what the circumstances.

May I say one more time how much I love you (infinity times, well, infinity!), how much I enjoy serving by your side (tons!), and how deeply honored I am to journey through life with you (lots and lots and lots!).

With much love and affection,
Rob+





2020-2024

ST. MATTHEW'S EPISCOPAL CHURCH

STRATEGIC VISION

What is a strategic vision?

A basic definition of strategic vision, is "what an organization wants to become in the future". Our Strategic Vision will help guide all our efforts toward a common vision and goals as a church.

Mission = Why we exist

Vision = What we want to do

Core Values = What we are

Strategic Goals = How we achieve our vision

TO ACHIEVE OUR MISSION, WE NEED YOU!

- Pray for our church as we journey together to achieve our goals.
- Help guide all our efforts toward a common vision as a church. Everyone's talents are needed to help achieve this vision.
- Get involved! Volunteer for Backpack Buddies, Youth Group, Faith Factory, small groups, virtual community building, bible study, Celebration Garden, worship team, or any way you feel you can contribute!

SET GOALS, AIM HIGH, AND LIVE INTENTIONALLY.

MISSION TO KNOW AND SHARE GOD'S LOVE

VISION

To develop a deeper connection with God, each other, and those in need in our global community

CORE VALUES



Creative

Seeking innovative and engaging ways to know and share God's love.



Loving

Sharing God's love faithfully with everyone, everywhere, all the time.



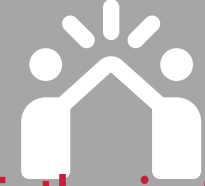
Adaptable

Remaining flexible to meet the ever-changing needs of our congregation and community.



Curious

Inspiring continuous learning, questioning, and growth in faith. Never settling for what's comfortable.



Enthusiastic

Working in God's name with joy in spirit, mind, and body.
HAVING FUN!

STRATEGIC GOALS

- Experience God through dynamic, musically-oriented, and transformative **WORSHIP**.
- Cultivate a **WELCOMING** environment for ALL people and family structures seeking deeper relationships with God and each other.
- **FORM** our identity in Jesus so that we find common ground through making a difference rather than making statements.
- Prioritize the development of our next generation through relatable experiences that attract and engage **YOUTH** of all ages.
- Fill the whole world with God's Word and love through mission, community, and **OUTREACH**.



YEAR IN REVIEW

23,747

Total in Attendance in 2020

4,371

Total Video Segments
Created

120

Full Length Live-Stream
Services



"The story of real people helping real people with very real needs
in very real ways"

-Rev. Rob Merola

YEAR IN REVIEW





3

In-Person Events
*Pre-COVID

29

Virtual Talent Show
Participants

10

Virtual Bingo Nights

37

Virtual Social Hours



10

British Tea Parties on Zoom

15

Trivia Nights

89

Virtual Coffee Hours

8

Everyday Hero Interviews



This year St. Matthew's Community really shined in expressing our core values of **Creativity, Adaptability, and Enthusiasm!** We found new ways to stay connected through social distancing.

- January was an EXPLOSION of the taste buds as we held our Chili Cook-off.
- February was our Annual meeting luncheon and heartfelt send-off to Rev. Grant.
- The end of February saw us celebrating Shrove Tuesday with our annual pancake supper.
- April saw Community embrace the world of technology hosting weekly virtual: Bingo nights, Trivia nights, Cocktail parties, British tea time, Social and Coffee hours.
- September we received our 1st Eucharist since March outdoors along with a fabulous Woodstock concert and refreshments from our very own Celebration garden and upscale production of our first Virtual Talent Show!

And yes, we did indeed end the year with a BLAST. That was the BLAST of horns blowing & people shouting as we celebrated Reverend Mary Margaret's ordination to the priesthood!!



REVERENCE

40

In-person Services

120

Full-length Livestream Services

196

Virtual Noonday Prayer Services

197

Virtual Compline Services

809

Attended Easter & Christmas Services Online

460

Attended Socially Distanced Outdoor Worship Services

Beginning March 15th, our physical doors were closed for in-person services. We moved to live-streaming and online services almost overnight.

Our reverence committee and worship teams worked hard all year showing their strength in Adaptability, Loving God and one another through creative worship, services and staying curious on how to constantly improve these experiences.



SPOTLIGHT | COMPLINE

""...I discovered Compline Services with Kevin on Facebook. His quotation, meditation, hymn or song and prayer, left me with something very important; hope. Within a day or two, I couldn't help, but to join in the Noonday Prayer Service, the group was extremely welcoming and I'd really felt like I'd joined a community..."

-Ginny



MUSIC & WORSHIP

192

Noonday Prayer &
Compline Services

59

Music Videos created by the
930 Band for Worship Services

13

People from 13 States and 2
Countries Regularly Attend
Noonday Prayer & Compline

24

Choir & Band Musicians

Worship teams worked hard all year showing their strength in Adaptability, Loving God and one another through creative worship, services and staying curious on how to constantly improve these experiences. From weekly music videos to daily noonday prayer and evening compline, helped to ensure music played a major part in St. Matthew's worship experiences.



SPOTLIGHT | 930 BAND

"The 9:30 Band is about making music but it is also about making connections, between the band and the congregation, the music and the listener, and between the members of the band itself.

We have found a way to maintain and even improve those connections during the pandemic through our weekly band videos. These connections have been one of my life preservers in the past year."

-Jeff Gilliam, Percussionist & Video Editor



OUTREACH

100,000

Diapers Donated

750

Rolls of Toilet Paper

730

Bags of Food Distributed

**Easter, Thanksgiving, Christmas & Day of Giving*

750

Bags of School Supplies

2,750

Glue Sticks

48

Pairs of Headphones

18

Christmas Family
Adoptions

260

Households visited by
the Care Response Team

\$500

Donated to Sri Lanka Tsunami
Relief

\$5,000

Grocery Store Gift Cards

\$22,190

Amazon Gift Cards Given to
Local Teachers

\$40,000

In Gift Cards Given to
Backpack Buddies Families

143 Miles

Run to Raise Awareness to
Hunger in Loudoun County





SPOTLIGHT | BACKPACK BUDDIES

"The Backpack Buddies has really helped my children because sometimes I am not always there to be able to buy food for my kids as I work a busy schedule at my job. However, with the Backpack Buddies program my kids can have something to eat every Friday of the week.

I would like to thank the people that work in this program and I would also like to thank Linda Ables, throughout the whole time my children were in the program, everyone working in the program has been very professional. I don't know what I would do without this program. God bless you"



Loving

SPIRITUAL FORMATION

5,000+

Christmas Lights installed by
the Men's Group

400

Devotional Copies Printed &
Distributed

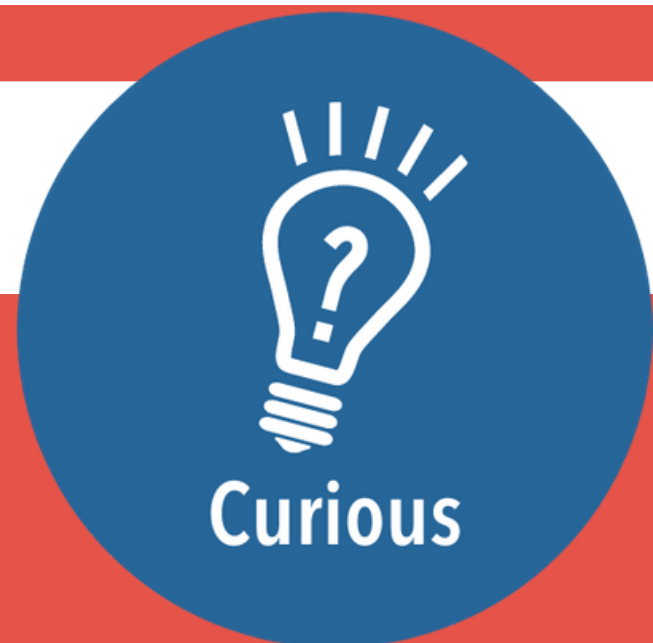
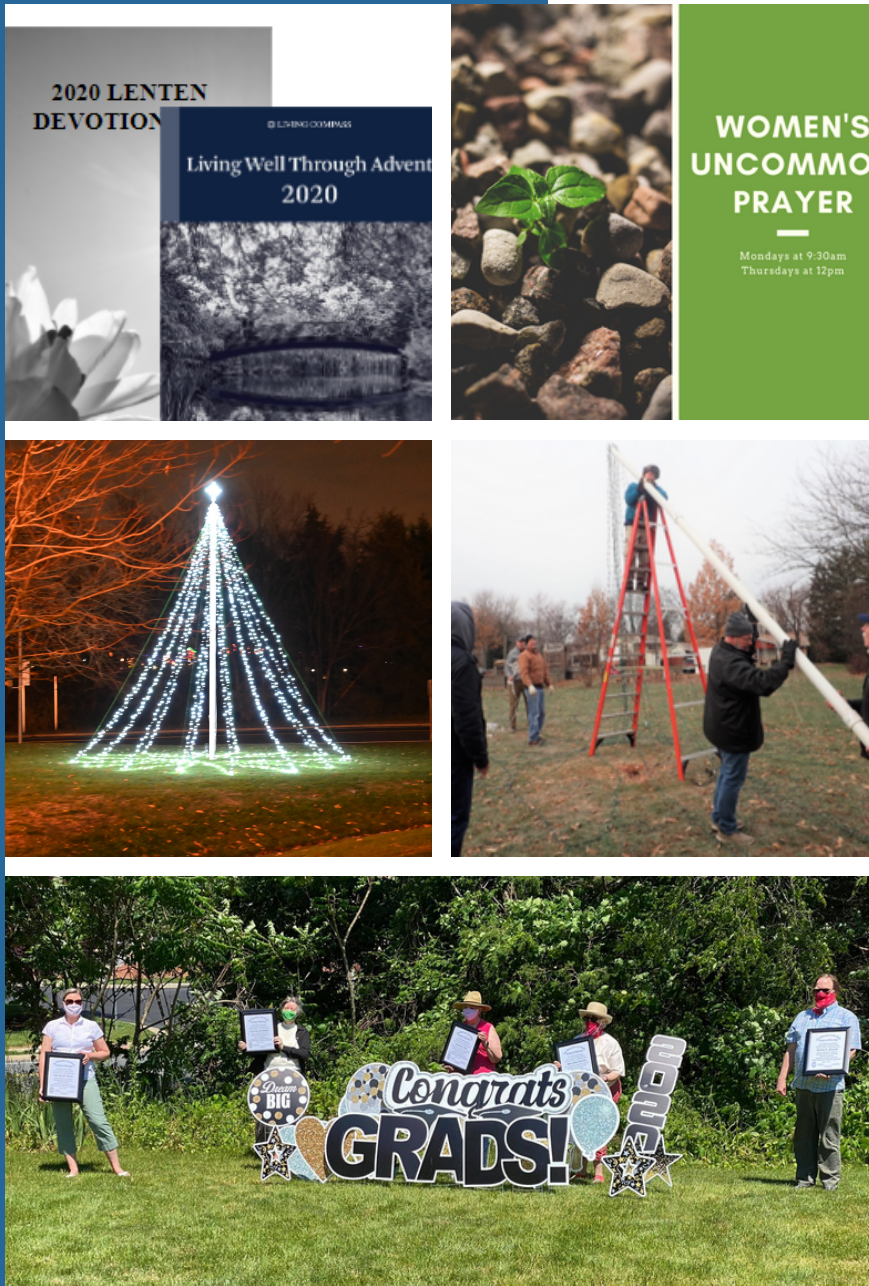
14

Bible Study & Prayer Groups

15

Global Leadership Virtual
Summit Attendees

St. Matthew's offered a wide variety of formation opportunities throughout the year from Education for Ministry (EfM), Global Leadership Summit, Weekly Wednesdays on Zoom (WONZ) to individual small group study and prayer like: Parenting in a Pandemic, What Happy Couples Know, Women's Uncommon Prayer, Sandwich Generation, and Bread of Life. Spiritual Formation offered support for many spiritual journeys during an exceptionally difficult year.



SPOTLIGHT | MEN'S GROUP

Every Saturday, rain or shine, the St. Matthew's Men's Group meet for fellowship and study. This group of 6-8 men dedicated their Saturday mornings this year to study books like Pilgrims Progress and Bonhoeffer's The Cost of Discipleship (a particularly challenging book to read and discuss). Despite the changes in gathering due to COVID, now meeting online they continue to enjoy fellowship and support one another. They can often be seen working on special projects such as the beautiful Christmas light display at St. Matthews.

CHILDREN

94

Stories Read at
Zoom Craft & Storytime

160

Faith Factory Kit Deliveries

23

Science Experiments

37

Toilet Paper Roll
Crafts Made

25

Bible Scavenger Hunts in Mr.
Pete's Faith Factory Class

6

Bible Buddy Friends introduced
in Ms. Adrian's Class

17-13-1

17 Angels, 13 Animals and 1
Dragon in the Christmas Pageant

50

Times Nana Timmons quizzed
her class on the church seasons

52

VBS Participants

Ms. Adrian and the Faith Factory teachers connected with the children in unique and fun ways each week, teaching them to love God and one another. We learned about our Episcopal church seasons and traditions, found new creative outlets, and helped our children find a sense of normalcy all while embracing the changes of 2020.



SPOTLIGHT| CHILDREN'S MINISTRY

Despite social distancing, Children's Ministry stayed connected to the children of St. Matthew's and in the community through exciting and creative reading events, Virtual Vacation Bible School, weekly Zoom Faith Factory classes, a brand new Christmas Pageant and many, many, many toilet paper roll crafts!



YOUTH

7

Game Nights

17

Teens Attended
Awesome Rafting Adventure

12

Teens Attended
Outdoor Movie Night

6

Teens Participated
in Exploding Pumpkins



The youth are staying busy in the pandemic! Although we really haven't been able to gather, we are doing our best to stay connected, talk about important things, and have a ton of fun. A huge thank-you to our youth, our adult leaders, Heather and Tom, as well as everyone who supports our young people. We are grateful for our time together in 2020 and are excited about the year to come—we have some BIG things in store!

SPOTLIGHT | YOUTH GROUP

"Family togetherness is great, until it's not. I am grateful that I have a chance to hang out with people who are not related to me, even if it's just online."

-Betsy A., Youth Group Member





YOUNG PROFESSIONALS

4

Zoom Game Nights

2

Bible Study Series

1

Zoom Christmas Party

15

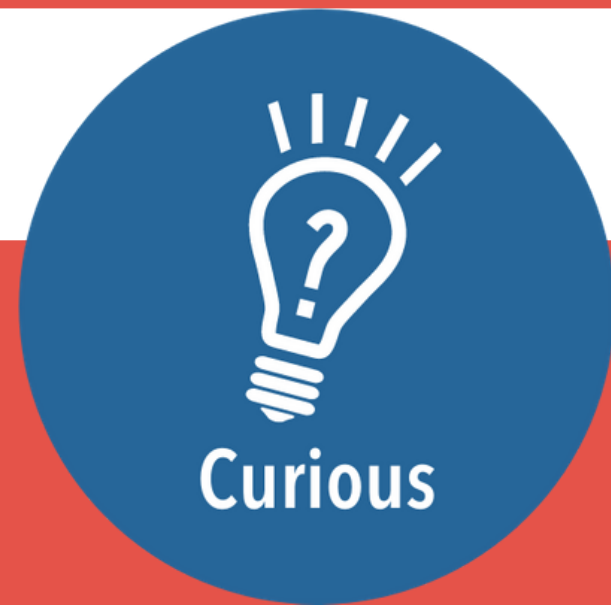
Miles Hiked

**Great Falls & Raven's Rock*

2

Attended

Pilgrimage to Israel

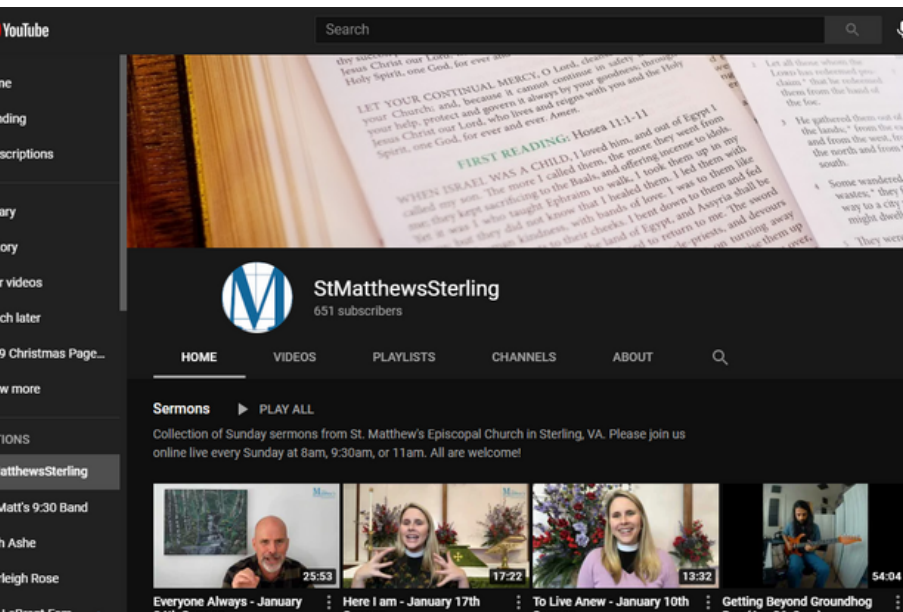


SPOTLIGHT | PILGRIMAGE TO ISRAEL

"I will forever remember my pilgrimage to Israel, and I think I can say with pretty good certainty that my fellow pilgrims would say the same. It was not just the beautiful landscape, or being where Jesus did so many remarkable and miraculous things. It was not just the poverty we saw in the Palestinian territories or the walls dividing the country. It was not just the magnificence of the Dome of the Rock, or the Wailing Wall. I think most of all it was worshiping together, every day, wherever we were or whatever the amazing sites we were seeing. We knew that we were being touched by God in a way that could never be replicated."

-Vicki A. Nelson





TECHNOLOGY

1

**New, Modern and Mobile
Friendly Website**

4,371

**Video Segments Created and
Edited by Staff and Families**

3

**New Editing, Encoding and
Streaming Tools**

2020 was quite a busy year for the St. Matt's video production team! Here are some highlights of the new capabilities we added to support our online services.

- New end to end video production workflow created to produce online services for streaming on Facebook and YouTube.
- New tools added to the workflow include: WeVideo (for video editing), Handbrake (for video encoding), and Restream.io (for video scheduling and streaming)
- Quickly enabled St. Matt's team with new, hi-def video cameras, microphones, and other video capture gear
- An incredible 4,371 video segments were created by the St. Matt's staff and families in 2020!
- These video segments were used to produce over 120 full length services (3 services each weekend plus special events)
- The virtual pews were consistently packed with St. Matt's families each week as hundreds of viewers tuned in online.

FINANCE

2020 HIGHLIGHTS

2020 Operating Income \$844K decrease of 2% from 2019

2020 Operating Expense \$864K increase 12% from 2019

2020 General Fund Surplus \$216K

2020 Debt \$921K

2020 Endowment Fund \$70K

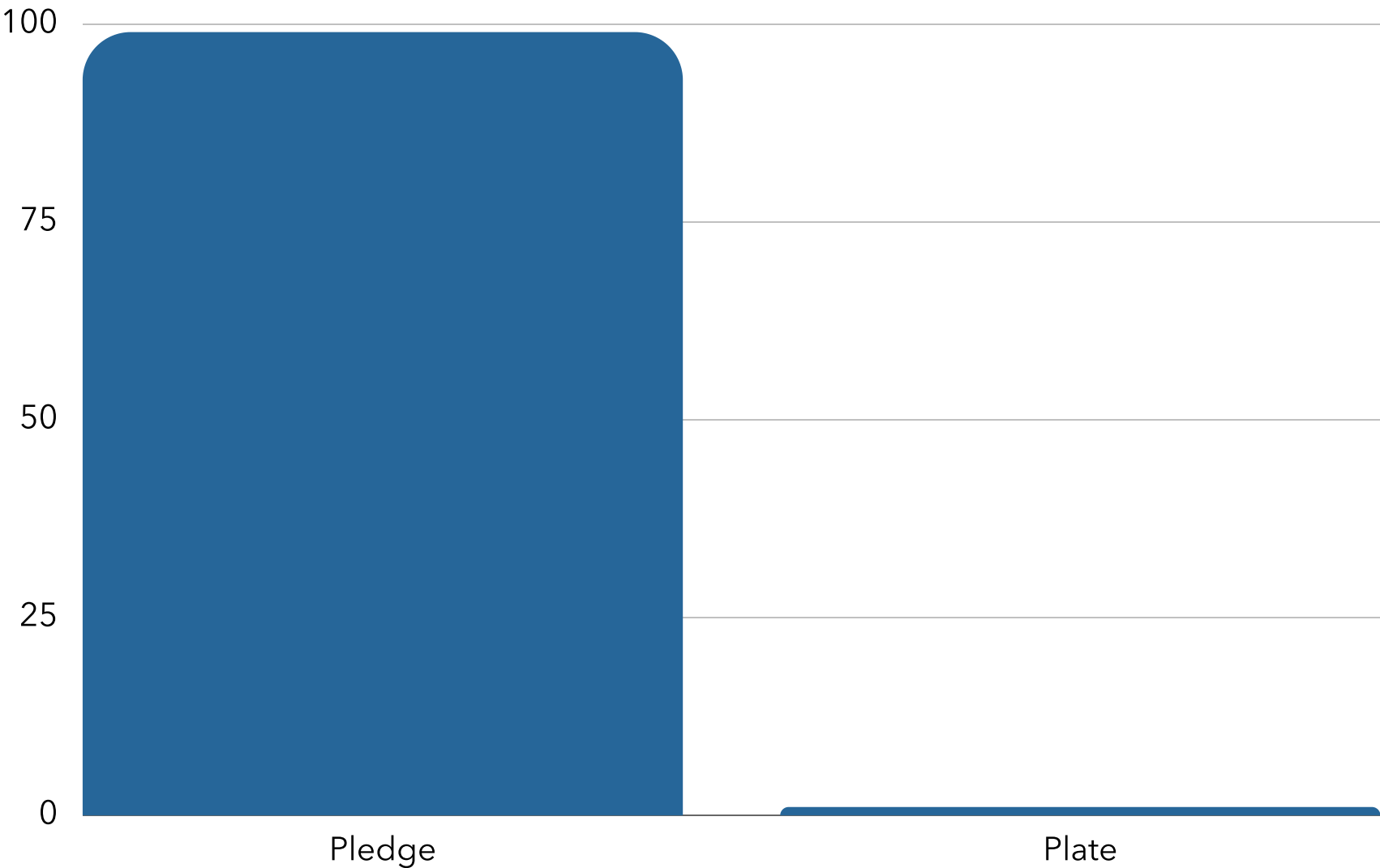
Notes:

- 2019 Operating income \$858K
- 2019 Operating Expense \$773K
- 2019 General Fund Surplus \$236K
- 2019 Debt \$978K
- 2019 Endowment Fund \$59K



St. Matthew's spent \$157,880 directly aiding our community in need through Backpack Buddies, Care Response Team, and Rector's direct efforts. This is in addition to the \$28,013 in aid through other Outreach efforts and Diocese support to other churches and programs totaled over \$270,000 in outreach in 2020.

2020 OPERATING INCOME



Total \$844K
Decrease of \$14K from 2019
• 2% decline from \$2019



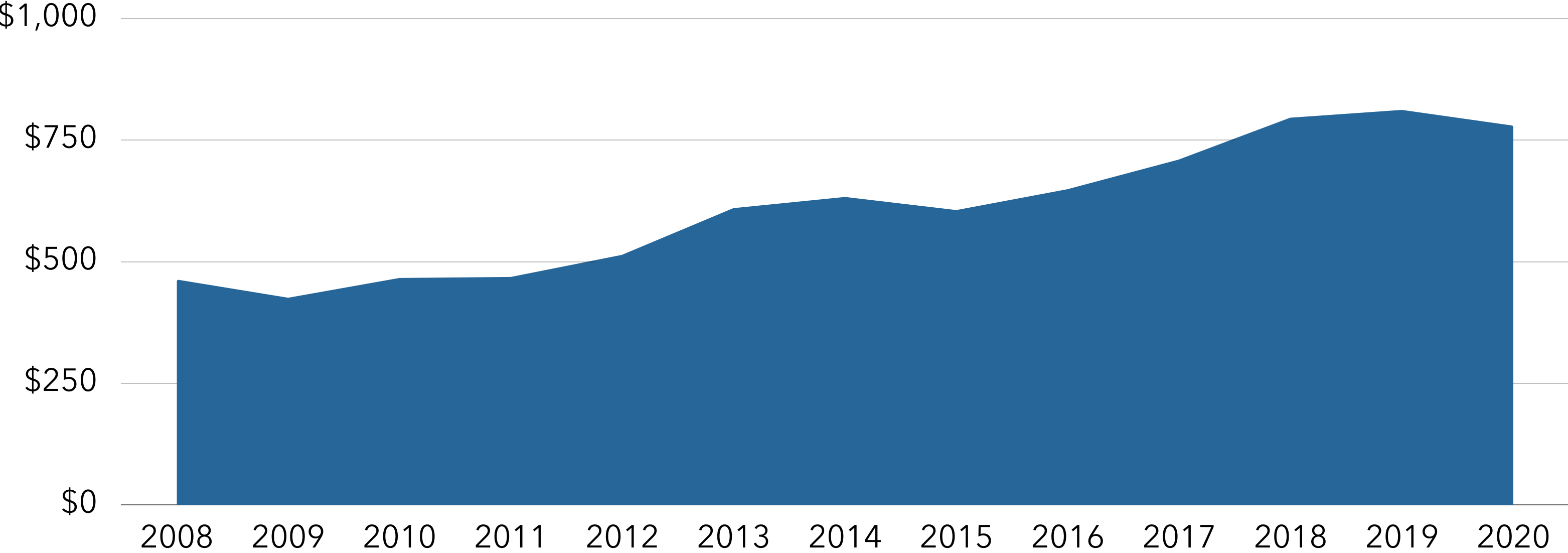
SPOTLIGHT | ONLINE GIVING

Holding true to our core value of being Adaptable, many of St. Matthew's congregants transitioned to online giving during 2020. This was pivotal to the incredible efforts St. Matthew's was able to make impacting our community in very real ways.

***In 2020 63% of giving was online and as of Jan 2021 81% has been online.**

stmtts.org/GIVE

2020 PLEDGE REVENUE

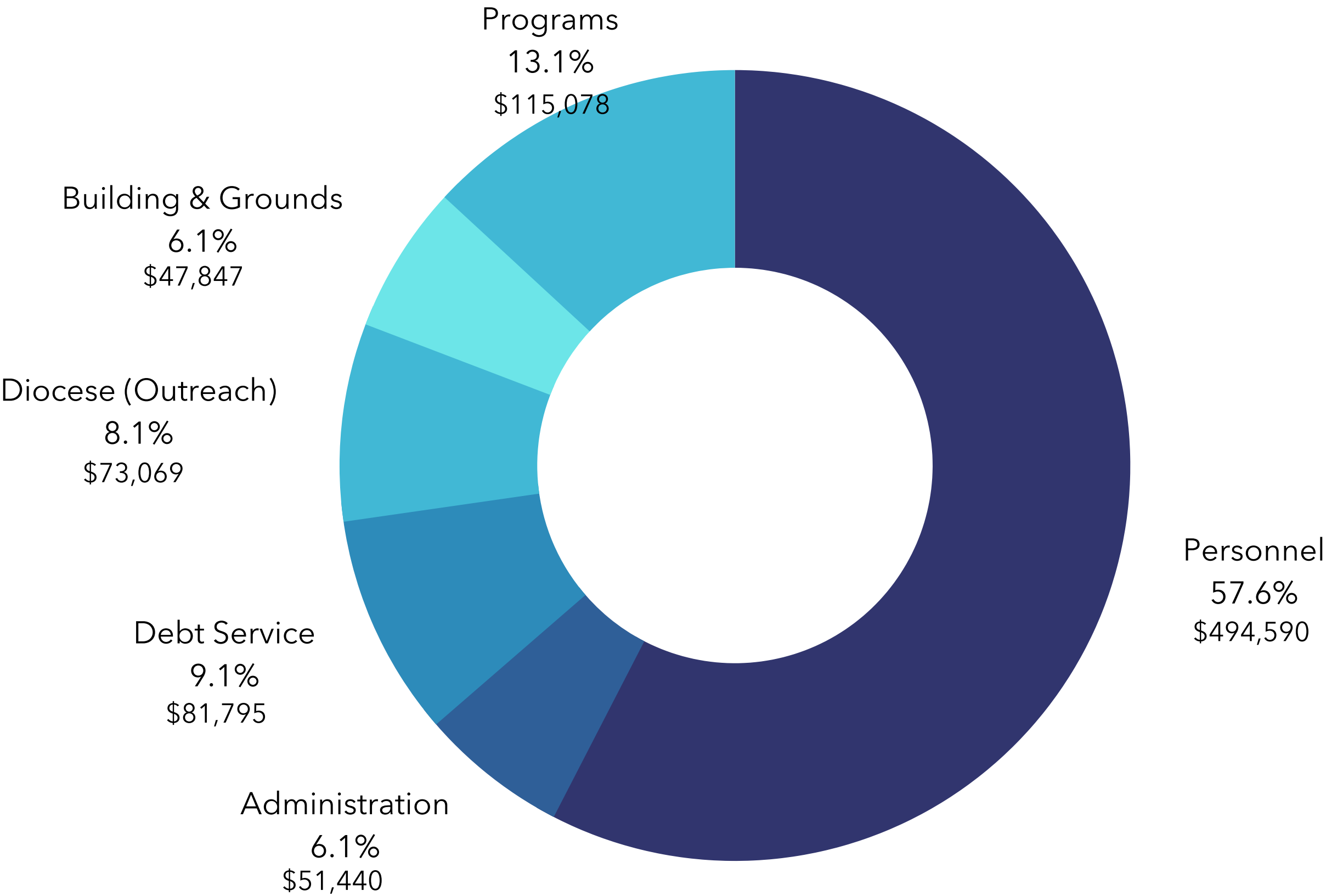


2020 OPERATING EXPENSE

Total \$864K

Debt \$921K

- Argonne Property 171K
- Church Property 750K



2020 ACTUALS

Budget Area	Amount	Change from 2019
Income	\$ 843,601	-2%
Personnel	\$ 494,590	25%
Administration	\$ 51,440	6%
Building & Grounds	\$ 47,847	-71%
Spiritual Formation	\$ 14,446	-59%
Outreach	\$ 119,082	63%
Other	\$ 46,080	19%



2021 OPERATING BUDGET

Income	Amount	Expense	(\$)
Pledge	798,000	Personnel	639,886
Plate	2,000	Building & Grounds	63,200
Building Use	0	General & Administrative	60,850
Interest/Endowment	6,500	Diocesan Related	72,900
Other	0	Programs	124,048
Surplus/Savings	246,384	Debt Service	92,000
TOTAL	1,052,884	TOTAL	1,052,884



Saint Matthew's Episcopal Church

Treasurer's Report

January 1, 2020 through December 31, 2020

Account	2020 Actual	2020 Budget	Over/(Under) Budget
Operating Income			
<i>Unrestricted</i>			
Pledge Offerings/Special Offerings	833,249	767,250	65,999
Plate Offerings	1,745	12,000	(10,255)
Building Use Donations	1,336	7,000	(5,664)
Interest Income	3,144	3,000	144
Revenue Unassigned	-	-	-
Other Operating Unrestricted	1,211	-	1,211
<i>Restricted</i>			
Other Operating Restricted	3,117	9,800	(6,683)
Total Operating Income	843,802	799,050	44,752
Operating Expense			
Personnel	494,590	483,133	11,457
G&A Expenses	51,440	59,500	(8,060)
Mortgage Expenses	81,795	91,400	(9,605)
B&G Expenses	47,847	62,800	(14,953)
Taxes and Insurance Expenses	8,538	8,100	438
Spiritual Formation Expenses	14,446	38,500	(24,054)
Outreach Expenses	119,082	88,845	30,237
Community Expenses	606	4,000	(3,394)
Stewardship Expense	24,000	24,000	-
Reverence Expenses	4,437	9,450	(5,013)
Technology	17,037	8,348	8,689
Total Operating Expense	863,819	878,076	(14,257)
Net Operating	(20,017)	(79,026)	59,009

Saint Matthew's Episcopal Church

Balance Sheet

As of December 31, 2020

Account Name	2020-Current Year	2019-Prior Year	Change from Prior Year
Assets			
Cash - Middleburg Checking	167,427	191,130	(23,703)
Cash - Middleburg Money Market	52,477	52,412	66
Cash - Capital One 360 Savings	181,453	156,485	24,968
Cash - STAMP Fund	5,000	5,000	-
Cash - Middleburg Rector Fund	9,566	2,802	6,763
Cash - Middleburg Asst Rector Fund	7,203	155	7,048
Endowment with Diocese	70,120	59,090	11,030
Current Assets & Investments	493,245	467,073	26,172
Fixed Assets			
Land	26,694	26,694	-
Church Building	1,815,385	1,815,385	-
Church Furniture and Equipment	63,481	63,481	-
Argonne House	310,000	310,000	-
Fixed Assets Total	2,215,560	2,215,560	-
Total Assets	2,708,805	2,682,634	26,172
Liabilities and Fund Balances			
Mortgage Payable - Argonne	170,684	195,089	(24,405)
Mortgage Payable - Church	749,920	782,848	(32,928)
Total Liabilities	920,604	977,936	(57,333)
General Fund Balance	216,439	236,456	(20,017)
GF - Seasonal Reserve Fund Balance	86,163	74,163	12,000
GF - Major Repair Reserve Balance	39,993	27,993	12,000
Postulancy Fund	1,908	-	1,908
Memorial Fund Balance	2,053	1,903	150
Columbarium Operating Fund Balance	13,007	12,007	1,000
Columbarium Maintenance Fund Balance	805	1,090	(285)
Garden Fund Balance	1,396	766	630
Mission Fund Balance	4,417	1,162	3,255
Building Fund Balance	600	16,575	(15,975)
Backpack Buddies Fund Balance	22,479	7,285	15,194
Rector's Discretionary Fund Balance	9,566	2,802	6,763
Asst Rector's Discretionary Fund	7,205	157	7,048
Sabbatical Fund Balance	17,094	14,594	2,500
Endowment Fund Balance	70,120	70,120	-
Net Fixed Assets Fund Balance	1,294,957	1,237,624	57,333
Total Fund Balance	1,788,202	1,704,698	83,504
Total Liabilities and Fund Balances	2,708,805	2,682,634	26,172

Saint Matthew's Episcopal Church

Fund Balances

As of December 31, 2020

Account	Year End Balance 12/31/2019	2020 Revenues	2020 Expenses	Year End Balance 12/31/2020
Non Operating Funds				
Seasonal Reserve Fund	74,163	12,000	-	86,163
Major Repair Reserve Fund	27,993	12,000	-	39,993
Postulancy Fund	-	4,000	2,092	1,908
Memorial Fund	1,903	150	-	2,053
Columbarium Operating Fund	12,007	1,000	-	13,007
Columbarium Maintenance Fund	1,090	-	285	805
Garden Fund	766	630	-	1,396
Mission Trip Fund	1,162	7,718	4,463	4,417
Building Fund	16,575	600	16,575	600
Backpack Buddies Fund	7,285	65,346	50,152	22,479
CARES Fund	-	54,400	54,400	-
Rector's Discretionary Fund	2,802	53,569	46,805	9,566
Asst. Rector's Discretionary Fund	157	13,570	6,523	7,205
Sabbatical Fund	14,594	2,500	-	17,094
Endowment in GF Balance	11,030	-	11,030	-
Endowment Fund Balance	59,090	11,030	-	70,120
Total Non Operating Funds	230,618	238,513	192,325	276,806
Other Funds				
General Fund	236,456	843,802	863,819	216,439
Fixed Asset Fund Balance	1,237,624			
Repayment of Church Mortgage		32,723		
Adj to correct Church Mortgage balance		205		
Repayment of Argonne Mortgage		7,830		
Use of Building Funds to pay down Argonne Mortgage		16,575		1,294,957
Total Other Funds	1,474,080			1,511,396
All Funds	1,704,698			1,788,202